

## X-Ray Baggage Scanner Model: STXR-6550C



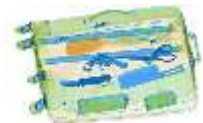
### Introduction:-

#### STXR-6550C Dual Energy X-ray Inspection System:

STXR-6550C uses reliable high quality X-ray generator. With the superb image algorithm, STXR-6550C could offer clear scanning image, which allows operators to identify potential threat items visually. STXR-6550C X-ray inspection system increases the operator's ability to identify potential threats; the device is designed to scan briefcases, carry-on baggage, small cargo parcels. With ergonomic modern design, STXR-6550C could help operators to identify suspicious items fast and accurately.\* Kindly note: STXR-6550C equipped with a computer keyboard

### Application field:-

Entertainment venues, tourist attractions, office buildings, shopping malls, factories, etc.;  
Suitable for security inspection of briefcase, hand luggage, postal parcels and other small package



### High Light:-

1. Black white and Pseudo color display
2. Windows 7 operation system
3. With independent industrial computer
4. Professional multi-function operation
5. Keyboard
6. Automatic save scanned image;
7. Reliable performance;
8. Friendly Image processing interface



### Technical characteristics:-

1. Single energy penetration system;
2. New radiation protection technology;
3. TIP program;
4. Clear and distinct image;
5. Scanned imaged can zoom up to 64 times
6. Integrated structure design, refinement appearance
7. the latest ASIC all-digital solution design,
8. RTOS real-time image processing system

## Specifications

### General Specifications :

Model	STXR-6550C
Channel size	655 * 505 mm (width * height)
Conveyor speed	0.22m / s (adjustable)
Conveyor Max Load	120kg
Steel penetration	38mm
Line resolution	> 38 AWG
Spatial resolution	Horizontal/vertical $\Phi$ 1.0mm

### X-ray Generator

Tube voltage	Two x-ray generators operating at 140 KV (adjustable)
Tube current	0.6 ~ 1.2mA (adjustable)
Cooling	Sealed oil cooling / 100%
Duty cycle	100%, no preheating
Beam divergence angle	Diagonally 80 °
Protection function	Over voltage, over current, over temperature protection
X-ray sensor	L-shaped photodiode array detector (single energy), 12bit depth

### Radiation Saftey Indictors

X-ray Leakage	<0.5   Gy/h (at a distance of 5cm From external housing)
Single dose:	<5.0 $\mu$ Gy
Film Safety	Safety on the ISO1600
Lead curtain	The main body is protected by a 2 ~ 4mm lead plate to ensure that the peripheral radiation of the equipment meets the national safety standards

### Image & Vedio

Display	High-resolution 19-inch LCD Monitor
Color Image Display	24-bit true color display
Edge enhancement	The outline of objects more clear edge
Super image enhancement	clearer image details
High penetration display	Improve the image contrast in bright areas, so as to penetrate the area more clearly

### Installation Data

Noise level	<58 dB(A)
Weight	480 Kg (including wooden box)
Power Requirements	AC220V $\pm$ 10%, 60Hz $\pm$ 5Hz
Power consumption	0.4 KW (MAX)
Humidity	20%-95%, non-condensing
Specification size	2200 mm(L) * 980mm(W)*1300mm(H)
Packing size	2300 mm(L) * 1060mm(W)*1470mm(H)

### Console

Type:	Single screen console
Weight:	100 Kg (including wooden box)
Specification size:	620 mm(L) * 750mm(W)*1260mm(H)
Wooden box size:	700 mm(L) * 830mm(W)*1400mm(H)

