

X-Ray Baggage Scanner Model: STXR-10080C



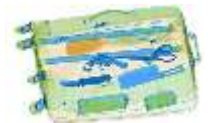
Introduction:-

STXR-10080C Dual Energy X-ray Inspection System:

STXR-10080C uses reliable high quality X-ray generator. With the superb image algorithm, STXR-10080C could offer clear scanning image, which allows operators to identify potential threat items visually. STXR-10080 X-ray inspection system increases the operator's ability to identify potential threats; the device is designed to scan briefcases, carry-on baggage, small cargo parcels. With ergonomic modern design, STXR-10080C could help operators to identify suspicious items fast and accurately.* Kindly note: STXR-10080C equipped with a computer keyboard

Application field:-

Entertainment venues, tourist attractions, office buildings, shopping malls, factories, etc.;
Suitable for security inspection of briefcase, hand luggage, postal parcels and other small package



High Light:-

1. Black white and Pseudo color display
2. Windows 7 operation system
3. With independent industrial computer
4. Professional multi-function operation
5. Keyboard
6. Automatic save scanned image;
7. Reliable performance;
8. Friendly Image processing interface



Technical characteristics:-

1. Single energy penetration system;
2. New radiation protection technology;
3. TIP program;
4. Clear and distinct image;
5. Scanned imaged can zoom up to 64 times
6. Integrated structure design, refinement appearance
7. the latest ASIC all-digital solution design
8. RTOS real-time image processing system

Specifications

General Specifications :

Model	STXR-10080C
Channel size	1005 * 805 mm (width * height)
Conveyor speed	0.22m / s (adjustable)
Conveyor Max Load	250kg
Steel penetration	38mm
Line resolution	> 38 AWG
Spatial resolution	Horizontal/vertical Φ 1.0mm

X-ray Generator

Tube voltage	Two x-ray generators operating at 140 ~ 160 KV (adjustable)
Tube current	0.6 ~ 1.2mA (adjustable)
cooling	Sealed oil cooling / 100%
Duty cycle	100%, no preheating
Beam divergence angle	Diagonally 80 °
Protection function	Over voltage, over current, over temperature protection
X-ray sensor	L-shaped photodiode array detector (single energy), 12bit depth

Radiation Safety Indicators

X-ray Leakage	<0.5 Gy/h (at a distance of 5cm From external housing)
Single dose:	<5.0 μ Gy
Film Safety	Safety on the ISO1600
lead curtain	The main body is protected by a 2 ~ 6mm lead plate to ensure that the peripheral radiation of the equipment meets the national safety standards

Image & Video

Display	High-resolution 19-inch LCD Monitor
Color Image Display	24-bit true color display
Edge enhancement	The outline of objects more clear edge
Super image enhancement	Clearer image details
High penetration display	Improve the image contrast in bright areas, so as to penetrate the area more clearly

Installation Data

Noise level	<58 dB(A)
Weight	970 Kg (including wooden box)
Power Requirements	AC220V \pm 10%, 60Hz \pm 5Hz
Power consumption	0.8 KW (MAX)
Humidity	20%-95%, non-condensing
Specification size	3030 mm(L) * 1310mm(W)*1650mm(H)
Packing size	2350 mm(L) * 1400mm(W)*1810mm(H)

Console

Type:	Single screen console
Weight:	100 Kg (including wooden box)
Specification size:	620 mm(L) * 750mm(W)*1260mm(H)
Wooden box size:	700 mm(L) * 830mm(W)*1400mm(H)

