

# X-Ray Baggage Scanner Model: STXR-5030A



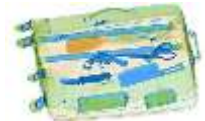
## Introduction:-

### STXR-5030A Single Energy X-ray Inspection System:

STXR-5030A uses reliable high quality X-ray generator. With the superb image algorithm, STXR-5030A could offer clear scanning image, which allows operators to identify potential threat items visually. STXR-5030A X-ray inspection system increases the operator's ability to identify potential threats; the device is designed to scan briefcases, carry-on baggage, small cargo parcels. With ergonomic modern design, STXR-5030A could help operators to identify suspicious items fast and accurately.\* Kindly note: STXR-5030A equipped with a computer keyboard

## Application field:-

Entertainment venues, tourist attractions, office buildings, shopping malls, factories, etc.;  
Suitable for security inspection of briefcase, hand luggage, postal parcels and other small package



## High Light:-

1. Black white and Pseudo color display
2. Windows 7 operation system
3. With independent industrial computer
4. Professional multi-function operation
5. Keyboard
6. Automatic save scanned image;
7. Reliable performance;
8. Friendly Image processing interface



## Technical characteristics:-

1. Single energy penetration system;
2. New radiation protection technology;
3. TIP program;
4. Clear and distinct image;
5. Scanned imaged can zoom up to 64 times
6. Integrated structure design, refinement appearance
7. the latest ASIC all-digital solution design,
8. RTOS real-time image processing system

## Specifications

### General Specifications :

<b>Model</b>	STXR-5030A
<b>Channel size</b>	505 * 305 mm (width * height)
<b>Conveyor speed</b>	0.22m / s (adjustable)
<b>Conveyor Max Load</b>	120kg
<b>steel penetration</b>	10mm
<b>Line resolution</b>	> 38 AWG
<b>Spatial resolution</b>	Horizontal/vertical $\Phi$ 1.0mm

### X-ray Generator

<b>Tube voltage</b>	80 KV (adjustable)
<b>Tube current</b>	0.6 ~ 1.2mA (adjustable)
<b>Cooling</b>	Sealed oil cooling / 100%
<b>Duty cycle</b>	100%, no preheating
<b>Beam divergence angle</b>	Diagonally 80 °
<b>Protection function</b>	Over voltage, over current, over temperature protection
<b>X-ray sensor</b>	L-shaped photodiode array detector (single energy), 12bit depth

### Radiation Safety Indicators

<b>X-ray Leakage</b>	<0.5   Gy/h (at a distance of 5cm From external housing)
<b>Single dose:</b>	<5.0 $\mu$ Gy
<b>Film Safety</b>	Safety on the ISO1600
<b>Lead curtain</b>	The main body is protected by a 2 ~ 4mm lead plate to ensure that the peripheral radiation of the equipment meets the national safety standards

### Image & Video

<b>Display</b>	High-resolution 19-inch LCD Monitor
<b>Color Image Display</b>	24-bit true color display
<b>Edge enhancement</b>	The outline of objects more clear edge
<b>Super image enhancement</b>	Clearer image details
<b>High penetration display</b>	Improve the image contrast in bright areas, so as to penetrate the area more clearly

### Installation Data

<b>Noise level</b>	<58 dB(A)
<b>Weight</b>	270 Kg (including wooden box)
<b>Power Requirements</b>	AC220V $\pm$ 10%, 60Hz $\pm$ 5Hz
<b>Power consumption</b>	0.4 KW (MAX)
<b>Humidity</b>	20%-95%, non-condensing
<b>Specification size</b>	1550 mm(L) * 800mm(W)*1100mm(H)
<b>Packing size</b>	1600 mm(L) * 880mm(W)*1260mm(H)

### Console

<b>Type:</b>	Single screen console
<b>Weight:</b>	100 Kg (including wooden box)
<b>Specification size:</b>	620 mm(L) * 750mm(W)*1260mm(H)
<b>Wooden box size:</b>	700 mm(L) * 830mm(W)*1400mm(H)

